



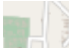
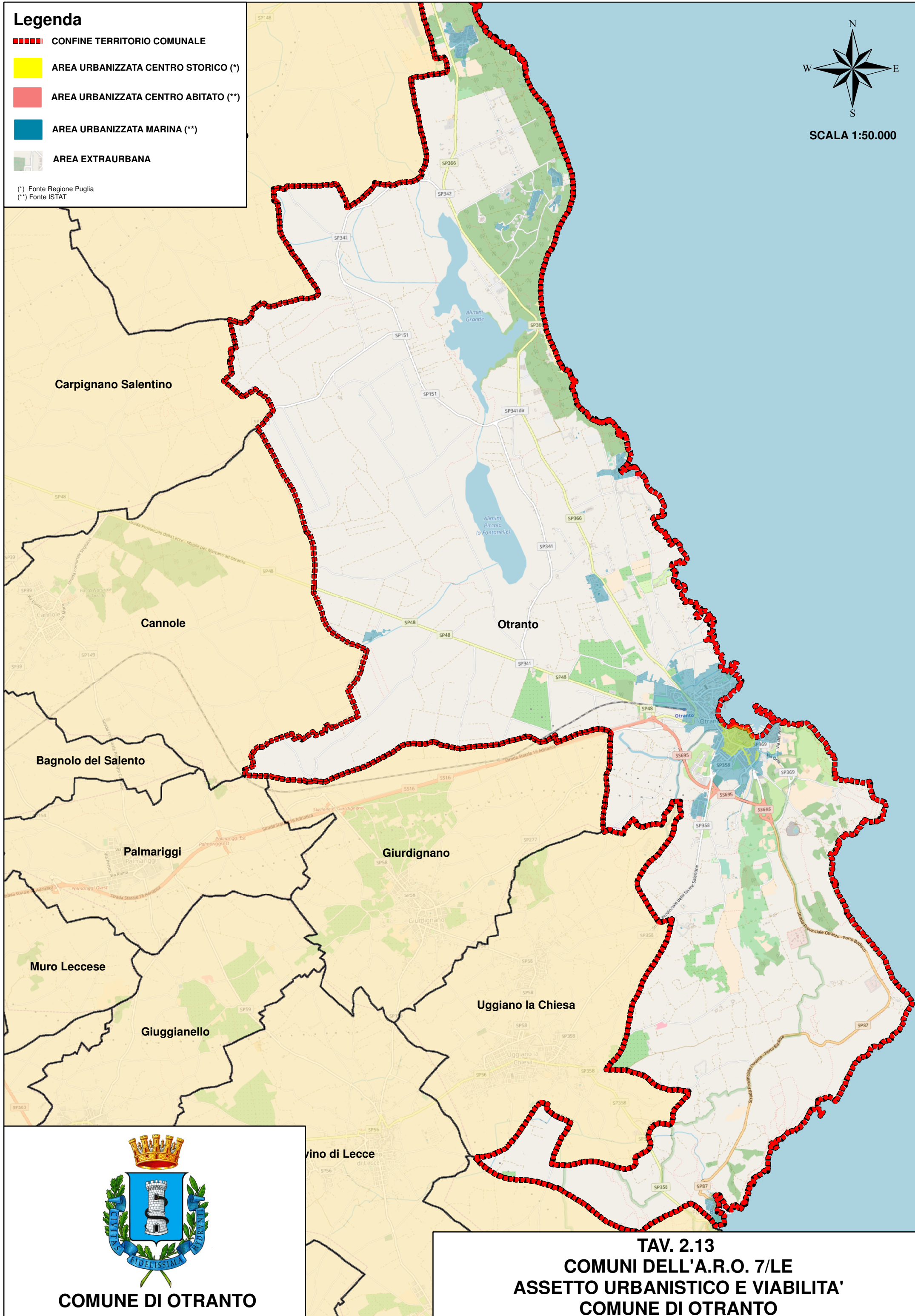


Legenda

	CONFINE TERRITORIO COMUNALE
	AREA URBANIZZATA CENTRO STORICO (*)
	AREA URBANIZZATA CENTRO ABITATO (**)
	AREA URBANIZZATA MARINA (**)
	AREA EXTRAURBANA

(*) Fonte Regione Puglia
(**) Fonte ISTAT

(*) Fonte Regione Puglia
(**) Fonte ISTAT

**COMUNE DI OTRANTO**

TAV. 2.13
COMUNI DELL'A.R.O. 7/LE
ASSETTO URBANISTICO E VIABILITA'
COMUNE DI OTRANTO